



**Coffee Pot Engine 0-4-0 vertical boiler  
Built in 1871 by Head Wrightson & Co Ltd  
for the Dorking Greystone Lime Company**

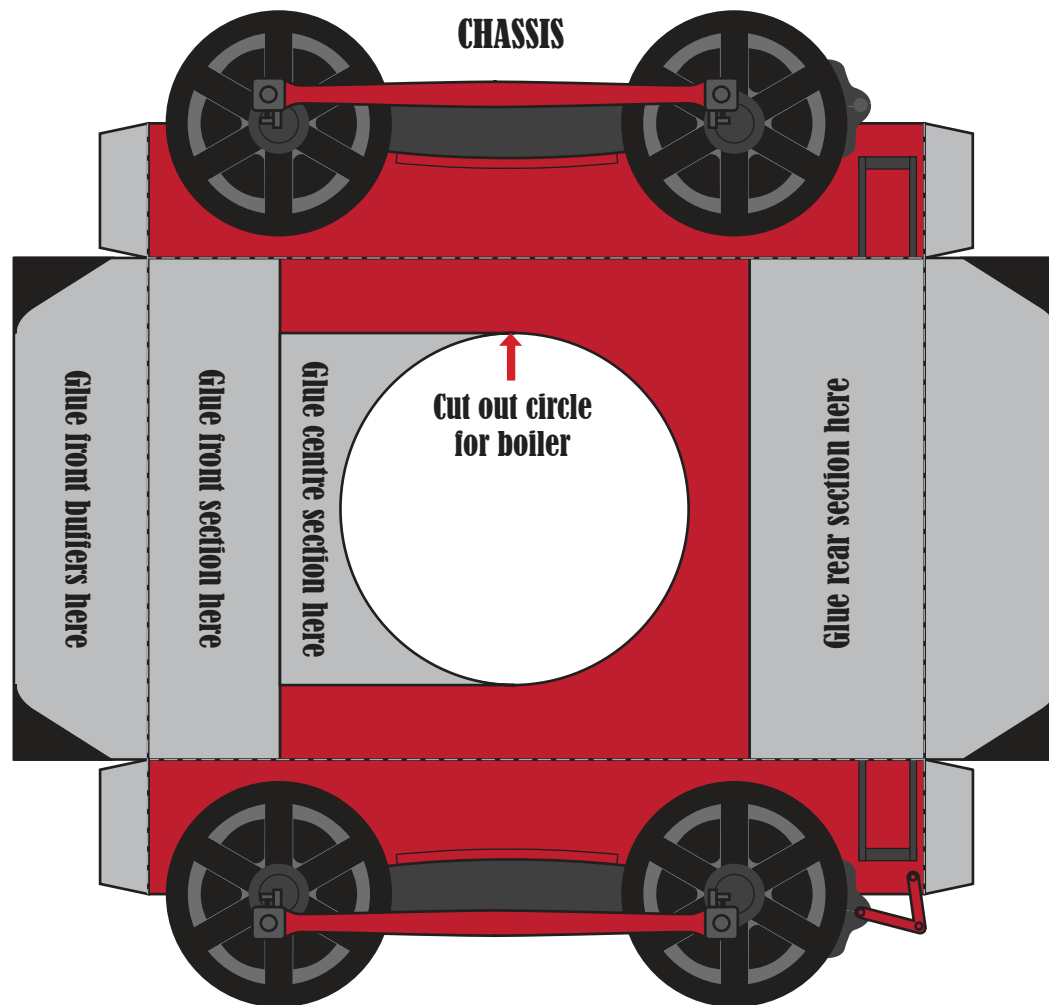
**Helpful hints to build your own Coffee Pot Engine**

Print both sheets on thick paper or thin card.

Lightly score dashed lines with a craft knife.

When gluing the funnel, wrap it around a pencil.

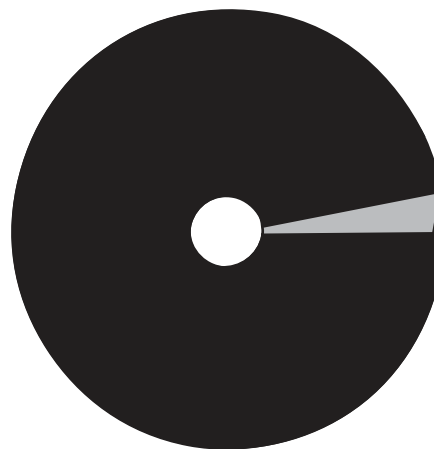
Stoke up the boiler and steam off down the line!



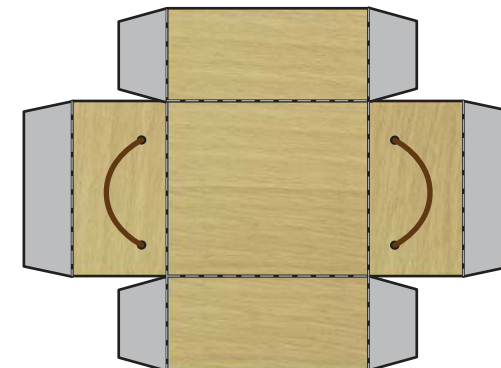
**BOILER FUNNEL**



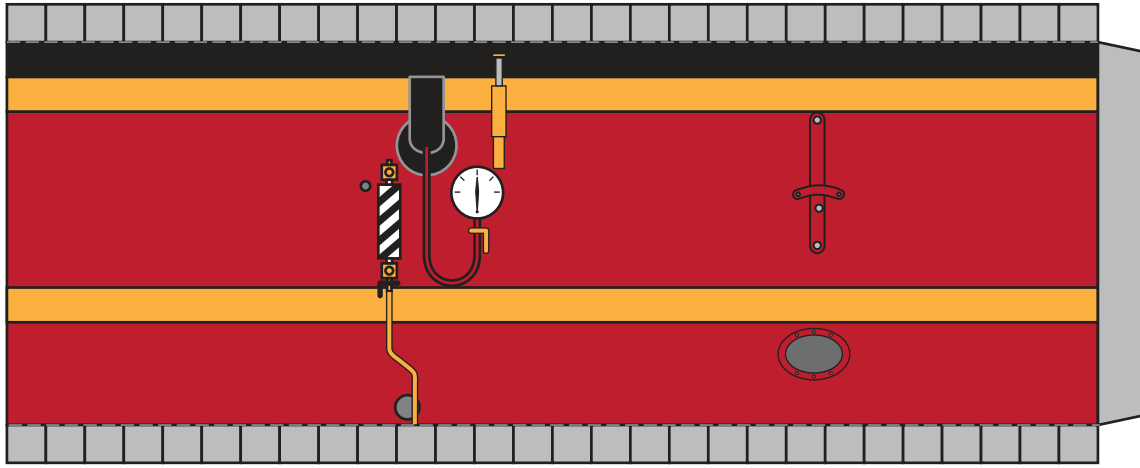
**BOILER TOP**



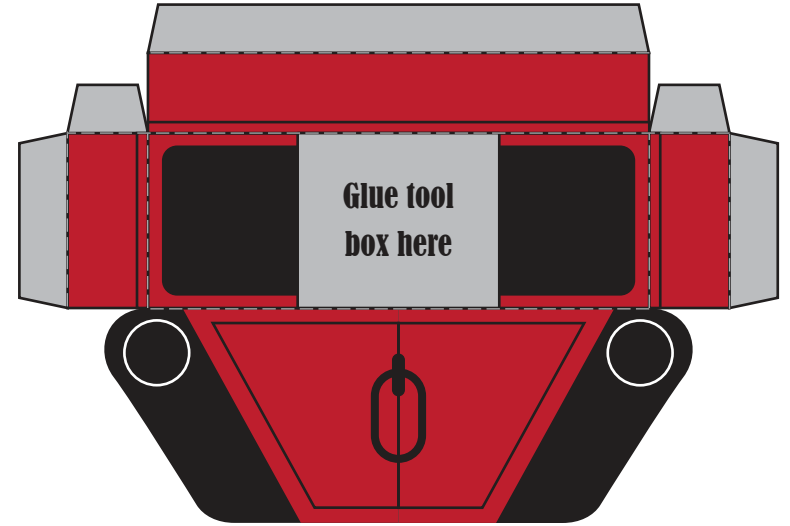
**TOOLBOX**



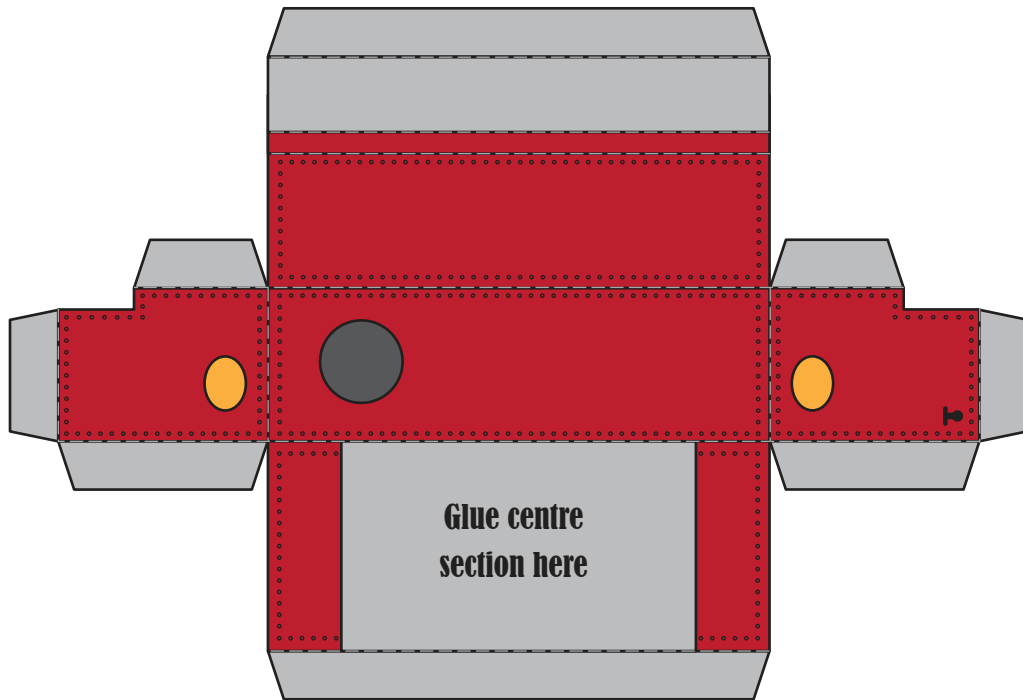
### BOILER



### REAR SECTION



### FRONT SECTION



### FRONT BUFFERS

